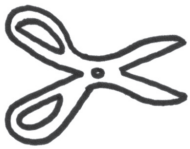


magic e

when an 'e' is at the end of a word it is silent
 the silent e makes the vowel that came before it
 say its name

without the silent e
 the u has a short vowel
 sound (like in 'up')

add a silent e at the end and
 change the sound of the vowel
 to the long vowel sound
 - it says its name, 'u'



cut

cute



kit__

can__

mad__



hop__



magic e

use your finger as a magic wand
magically change the sound of the vowel
by adding a silent e at the end

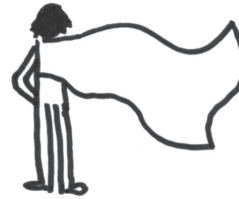
without the silent e
the a has a short vowel
sound (like ant)

add the silent e and
the a sound becomes long
- it says its name 'a'

cap



cap_e



cape

cub__

tap__



fin__

bit__

2 letters make one sound

ee

match the picture with the correct word



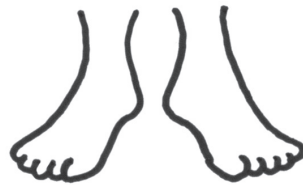
bee
sleep
been



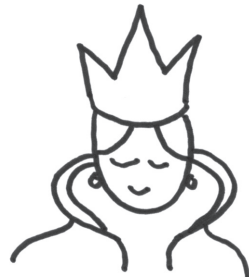
deep
sheep
jeep



beep
tree
steep



meet
feet
beet



see
queen
sheet

2 letters make one sound

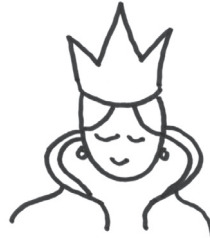
ee

read it, write it, colour it

tree



queen



feet



sweep



see



ee ea

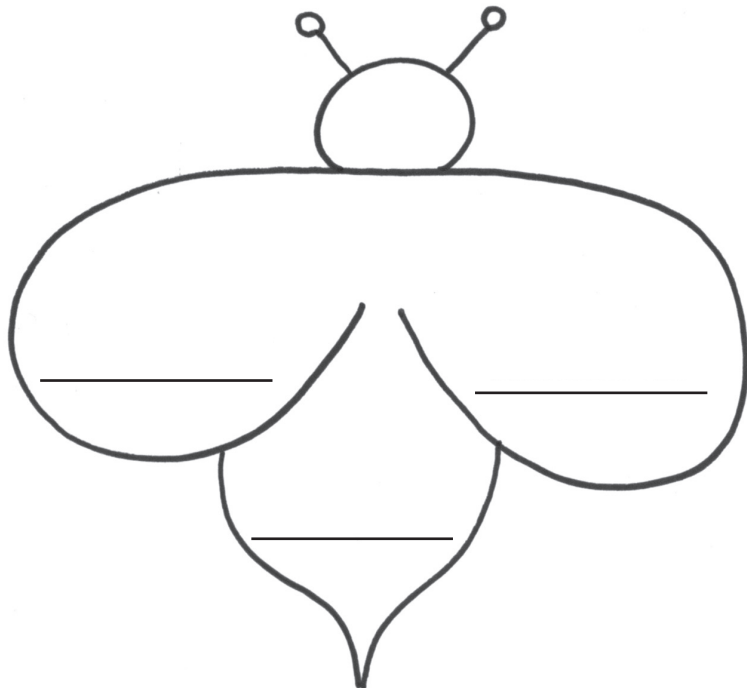
read the words below

write the words that have the 'ee' sound in the bee

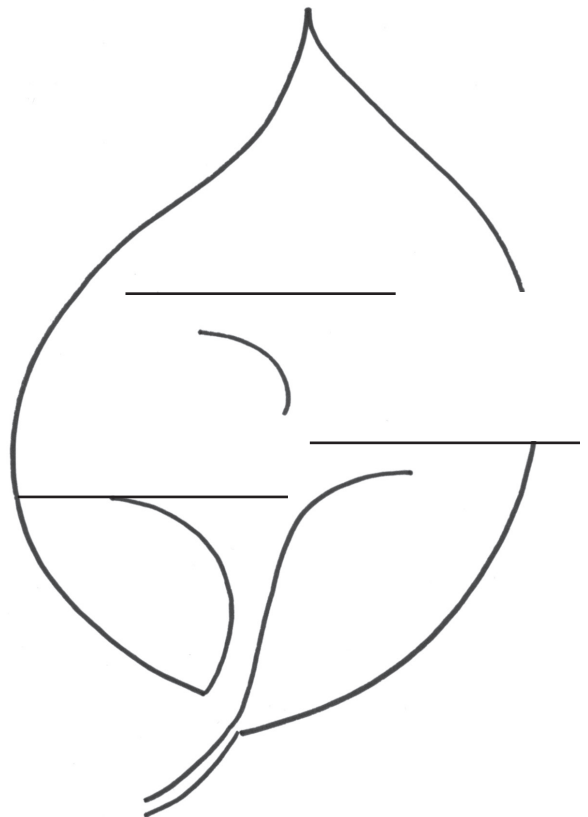
write the words that have the 'ea' sound in the leaf

sheep each tree
beach sweet seal

bee



leaf



ee ea

is it ee or ea?



b _ _



l _ _ f



tr _ _



b _ _ ch



sh _ _ p



p _ _ ch

long i sound

i says its name

'igh' says 'i'



'y' says 'i' at the end
of a one syllable word



'i' says 'i'
with a magic e



word sort

light	fly	bite
bike	tight	my
sky	like	right

igh

ends in y

magic e

igh

trace

write

colour

night



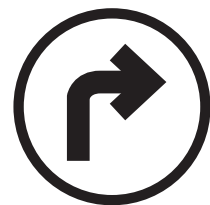
light



fright



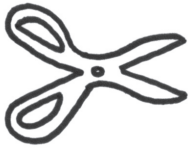
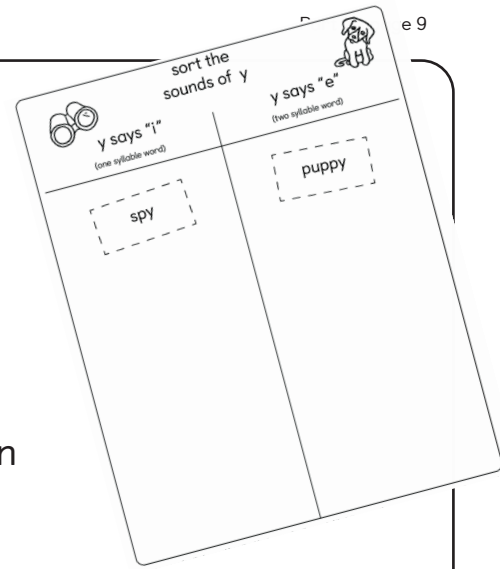
right



sounds of y

when it's at the end of a word
or syllable

cut out the words below
place them into the correct column
does the y say "i" or "e"



fly	happy
puppy	cry
spy	smelly
messy	why
my	slimy
sticky	fry

don't forget y says 'y' at the start of a word, like in "yes"



sort the sounds of y



y says "i"

(one syllable word)

y says "e"

(two syllable word)

spy

puppy

2 letters make one sound

oa

oa comes in the middle of a word,

oa makes the long o sound

fill in the missing oa letters and match the word with the picture

c _ _ t



g _ _ t



b _ _ t



r _ _ d



t _ _ d



2 letters make one sound

ow oa

in green, follow the oa words
to lead the toad – – to the boat

in red, follow the ow words
from blow – – to crow



toad

stop

bear

blow



road

coat

row

fox

bow

snow

oat

oak

crow

cat

mail

boat



2 letters make one sound

ai

ai comes in the middle of a word,
and makes the long a sound

follow the ai words
to lead the snail – – to the mail



--- snail stop bee

 |
 |
pail train fox

trap rain trail

ship cat mail



2 letters make one sound

ay

ay comes at the end of a word,
and makes the long a sound

write some words that rhyme with hay

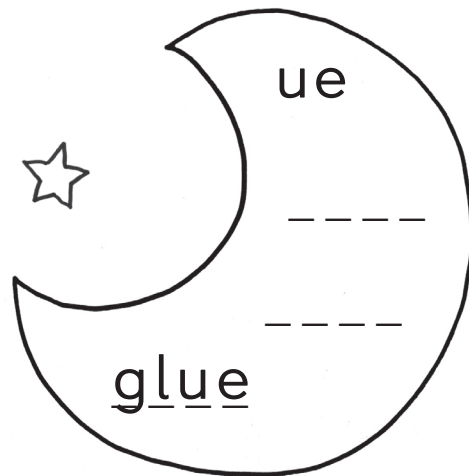
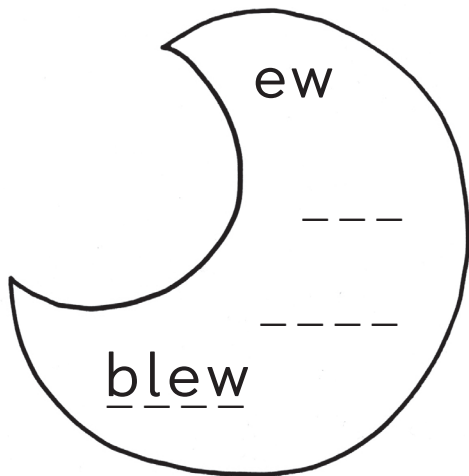
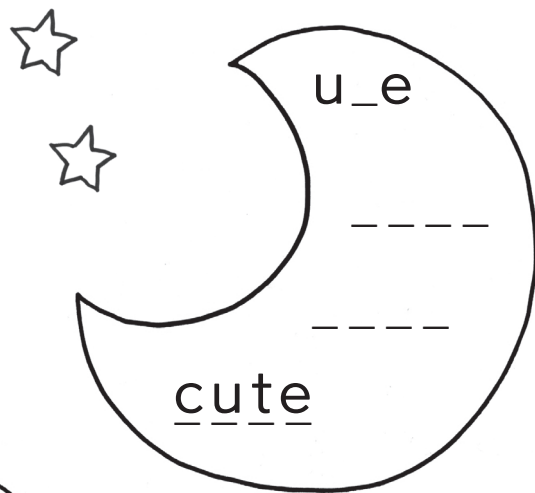
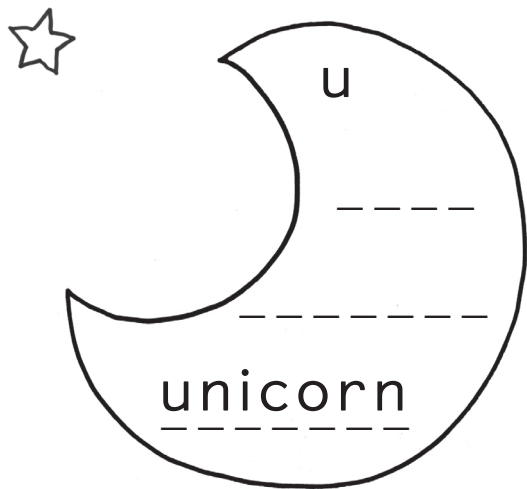
hay

day

the "u" sound

unit tube zoo uniform clue
 dude few moon blue grew

sort and say the
 sounds of "u"



words lists - long e



ee

middle or end



ea

start, middle or end



y

y says 'e' at the end of
a 2 syllable word

bee

leaf

puppy

sheep

eat

bunny

feel

each

sunny

sweet

seal

funny

tree

pea

happy

queen

beach

baby

deep

peach

candy

words lists - long i



igh



i_e

magic e



y

y says 'i' at the end of a
1 syllable word

light

kite

spy

night

bike

fly

fright

like

by

high

side

sky

right

hide

my



ie

pie tie lie die

'ie' also says 'i', but only in these 4 words, so it's not found very often

words lists - long o



oa

mostly in the middle, but
sometimes at the start

boat

toad

goat

soap

oat



o_e

magic e

home

smoke

joke

rode

bone



ow

mostly at the end

crow

bow

row

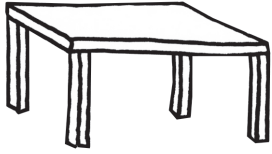
snow

blow

oe toe foe doe

only at the end, and only in these 3 words, so very rare

words lists - long a



a

at the start
or middle

table

acorn

apron

baby

paper

alien



a_e

magic e

cake

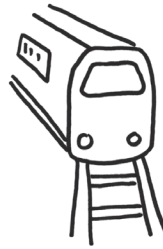
ate

same

gate

lake

take



ai

at the start
or middle

train

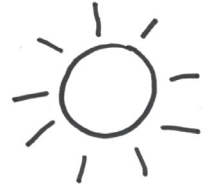
aim

rain

mail

wait

paint



ay

at the end

day

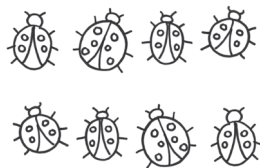
say

away

ray

play

today



8

eigh eight weigh eighteen

'eigh' also says 'ay', but not very often.
Learn eight as a sight word.

words lists - long u



u

at the start
or middle

unicorn

unit

uniform

human

music

student

duty



u_e

magic e

cute

use

tube

dude

flute



oo

in the middle
or the end

moon

scoot

zoo

tooth

balloon

toot

pool

food

boot

too



ew

at the end

blew

few

grew

chew

drew



ue

at the end

glue

clue

blue